

# The Anderson.

Located in a landmark building with an eye-catching curved facade, **The Harrison** offers Fort Wayne authentic upscale urban living.

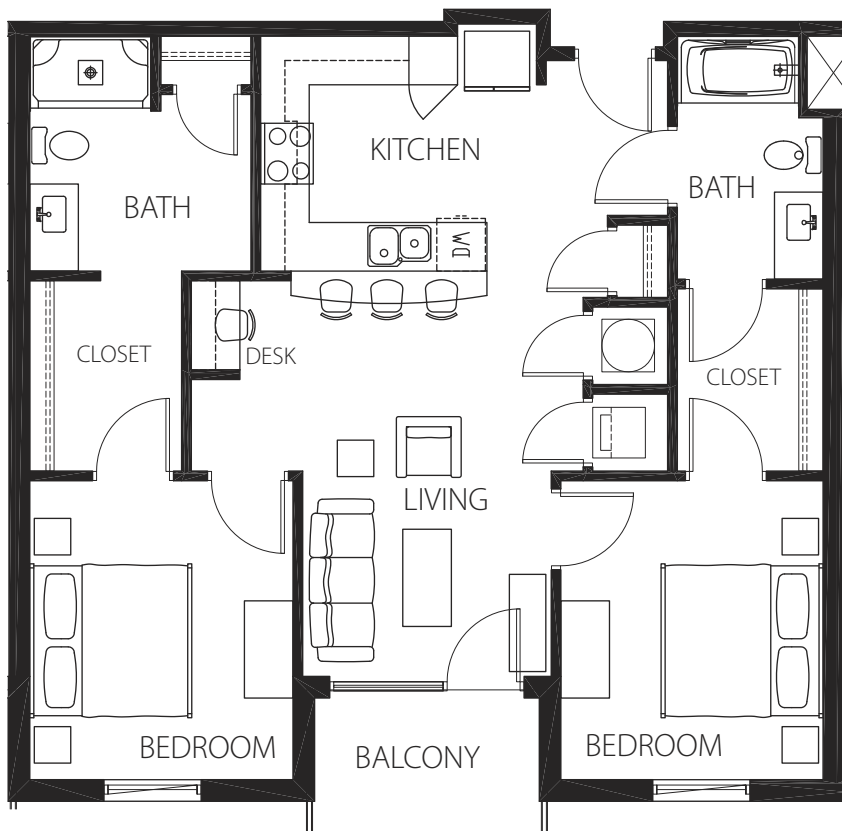
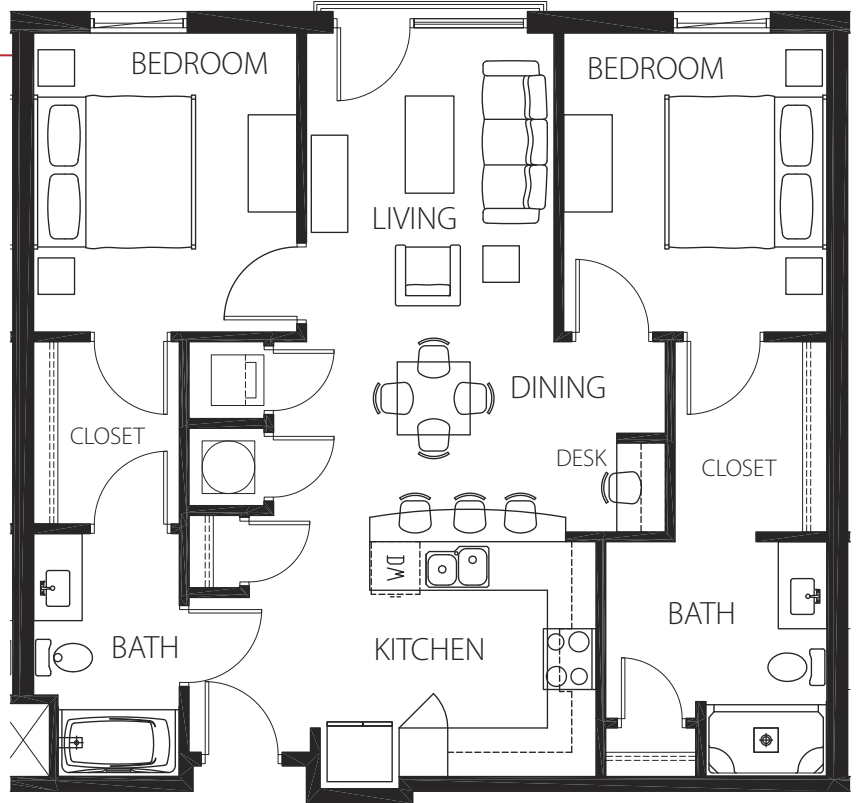
**CONTACT**

The Harrison  
(260) 402-2546  
info@theharrisonfw.com  
www.theharrisonfw.com

**Downtown View Unit**

2 Bedrooms / 2 Bathrooms  
993 SFT (Indoors)

(Interior with Ballpark View)



2 Bedrooms / 2 Bathrooms  
949 SFT (Indoors)  
57 SFT (Outdoors)

**Ballpark View Unit**

# The Carson.

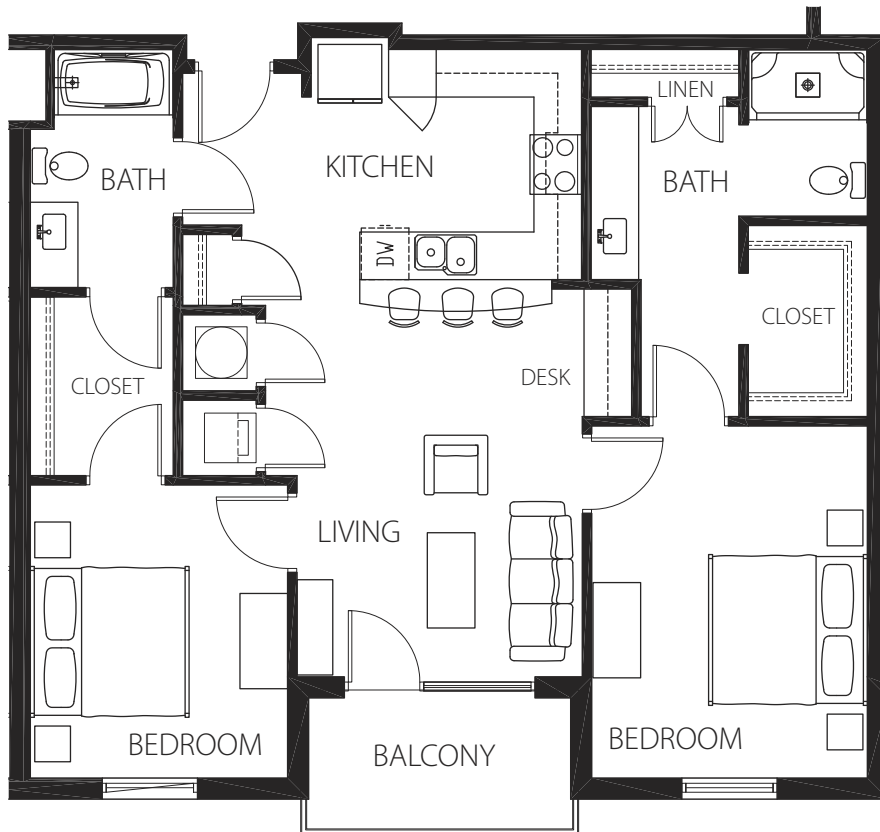
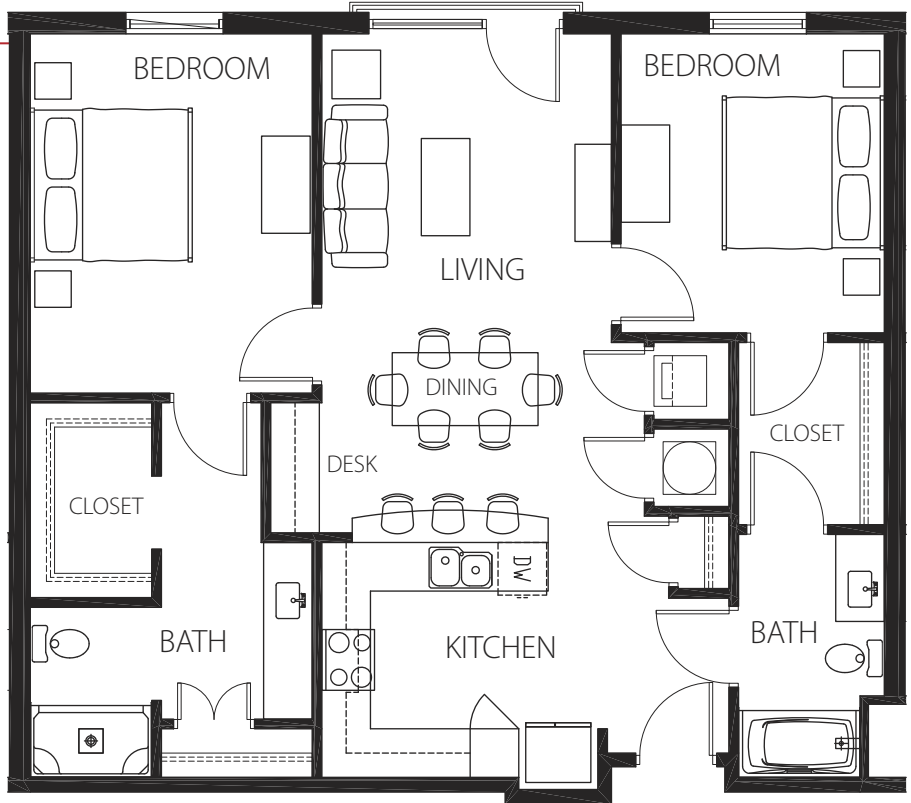
Located in a landmark building with an eye-catching curved facade, **The Harrison** offers Fort Wayne authentic upscale urban living.

**CONTACT**

The Harrison  
 (260) 402-2546  
[info@theharrisonfw.com](mailto:info@theharrisonfw.com)  
[www.theharrisonfw.com](http://www.theharrisonfw.com)

**Downtown View Unit**

2 Bedrooms / 2 Bathrooms  
 1,069 SFT (Indoors)



2 Bedrooms / 2 Bathrooms  
 1,018 SFT (Indoors)  
 63 SFT (Outdoors)

**Ballpark View Unit**

# The Jackson (ADA).

Located in a landmark building with an eye-catching curved facade,  
**The Harrison** offers Fort Wayne authentic upscale urban living.

**CONTACT**

The Harrison  
(260) 402-2546

[info@theharrisonfw.com](mailto:info@theharrisonfw.com)  
[www.theharrisonfw.com](http://www.theharrisonfw.com)

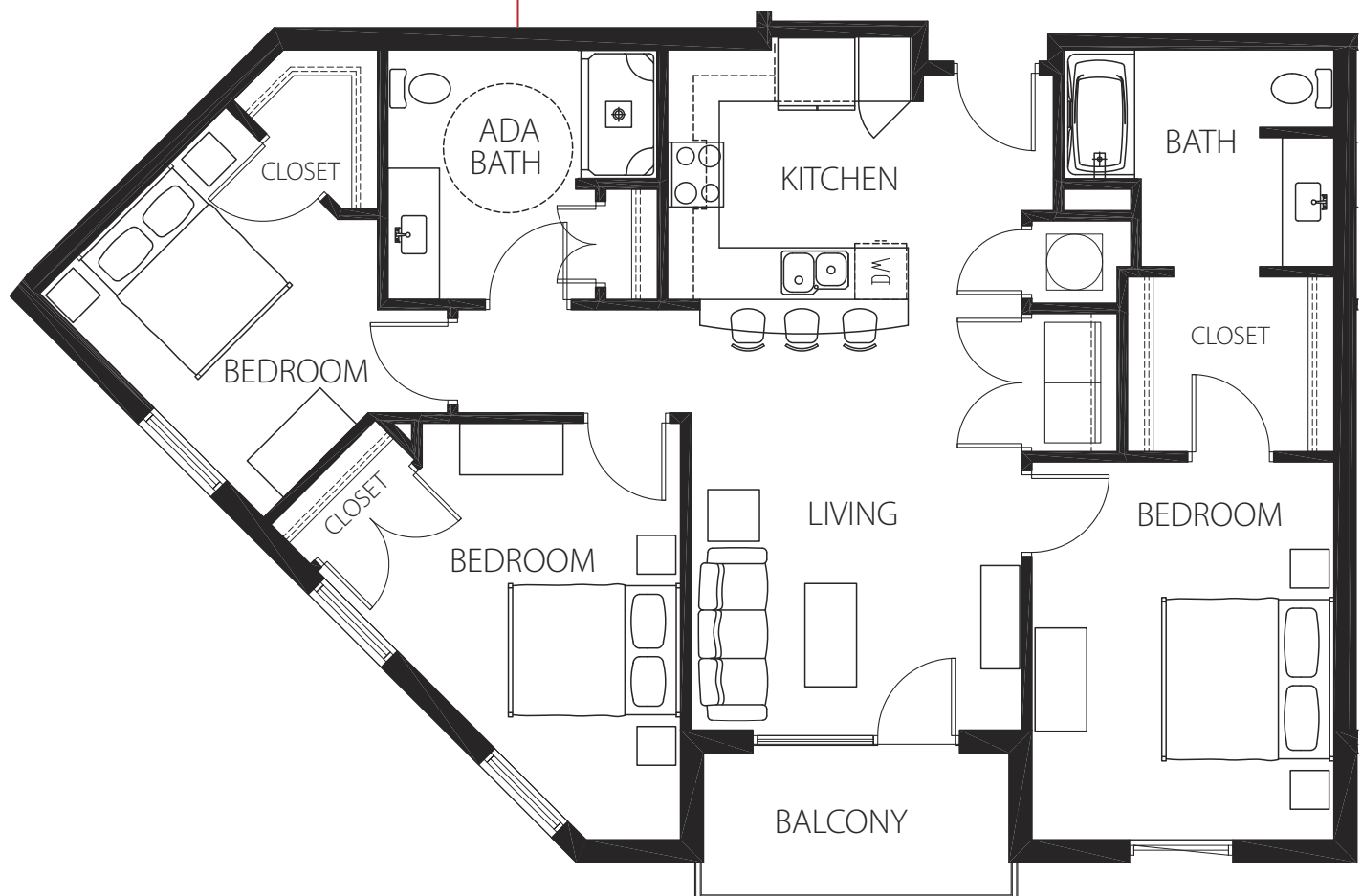
## Ballpark View Corner Unit

3 Bedrooms / 2 Bathrooms

ADA Bathroom

1,201 SFT (Indoors)

68 SFT (Outdoors)



# The Jefferson.

Located in a landmark building with an eye-catching curved facade, **The Harrison** offers Fort Wayne authentic upscale urban living.

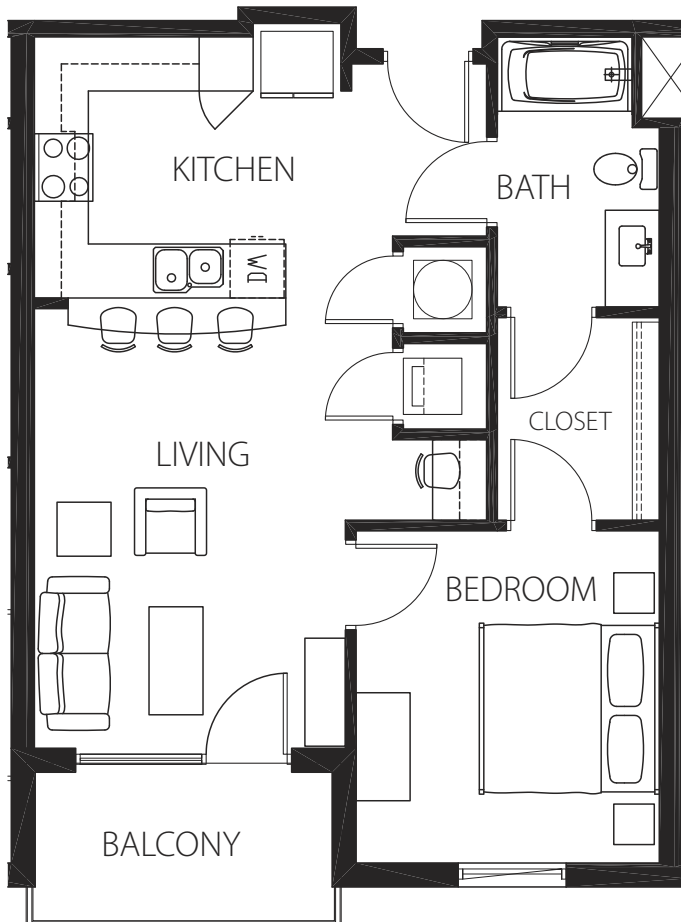
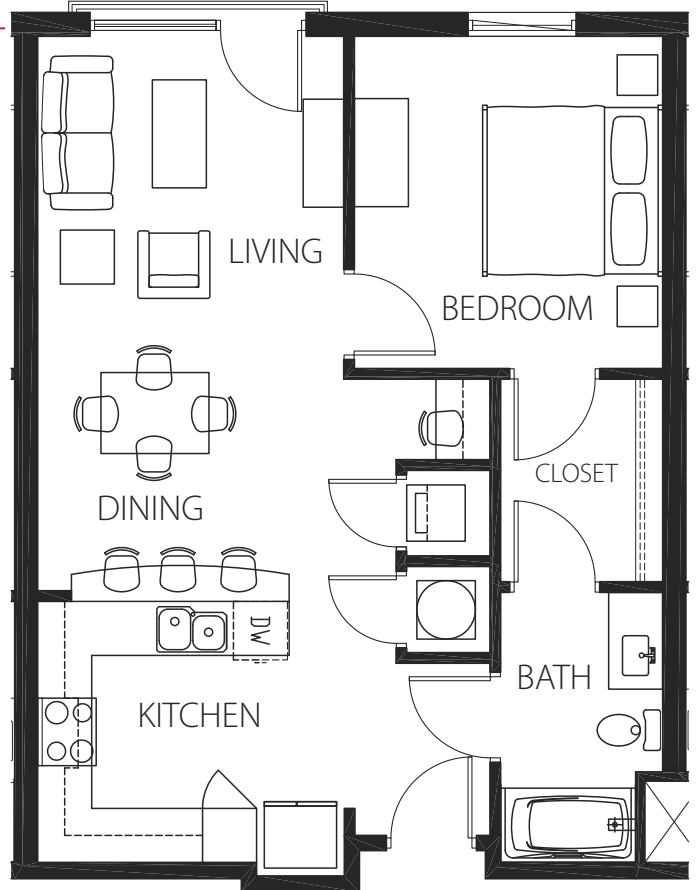
**CONTACT**

The Harrison  
 (260) 402-2546  
 info@theharrisonfw.com  
 www.theharrisonfw.com

**Downtown View Unit**

1 Bedroom / 1 Bathroom  
 702 SFT (Indoors)

(Interior with Downtown View)



1 Bedroom / 1 Bathroom  
 655 SFT (Indoors)  
 63 SFT (Outdoors)

**Ballpark View Unit**

# The Madison.

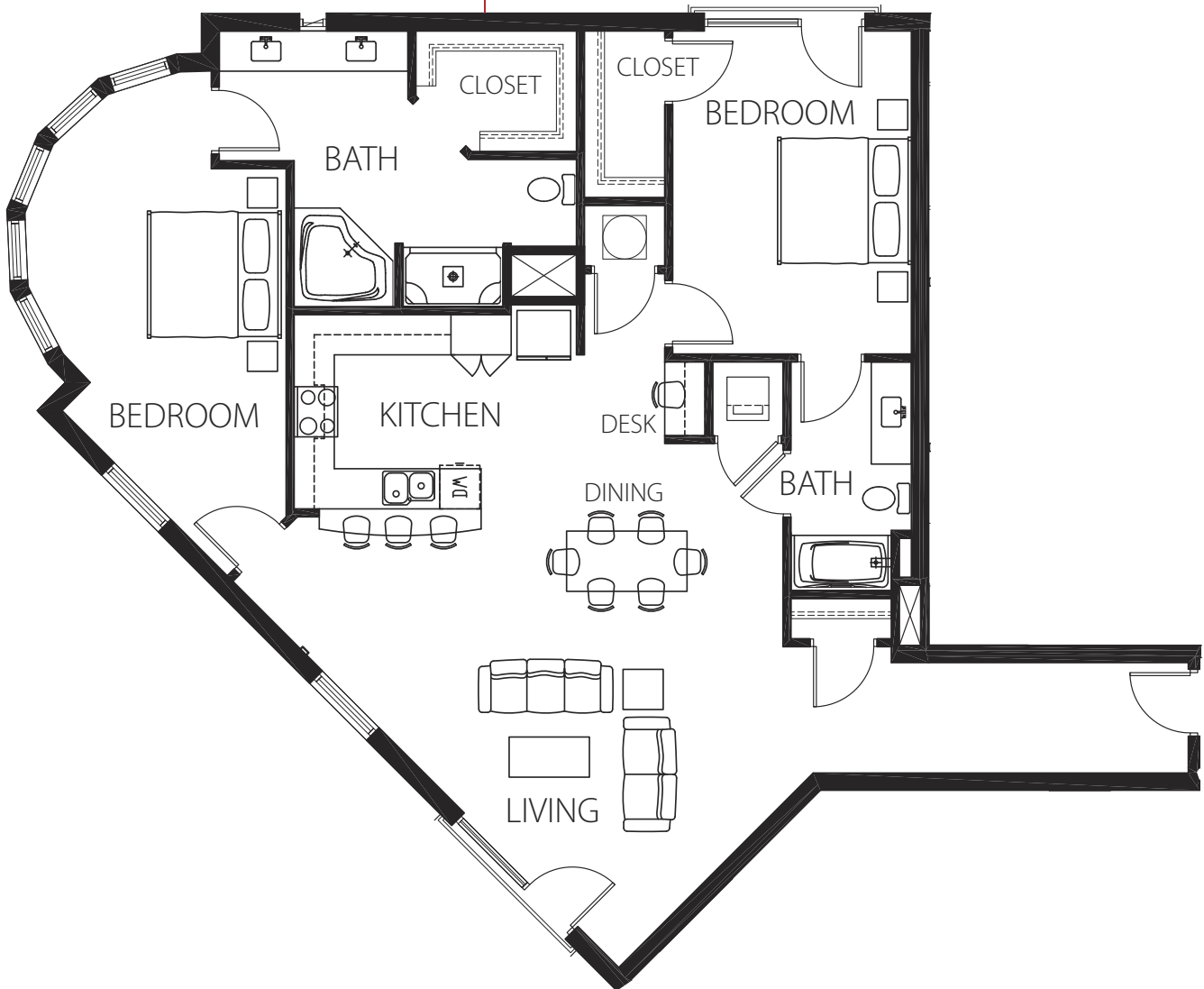
Located in a landmark building with an eye-catching curved facade, **The Harrison** offers Fort Wayne authentic upscale urban living.

**CONTACT**

The Harrison  
 (260) 402-2546  
[info@theharrisonfw.com](mailto:info@theharrisonfw.com)  
[www.theharrisonfw.com](http://www.theharrisonfw.com)

**Downtown View Corner Unit**

2 Bedrooms / 2 Bathrooms  
 1,554 SFT (Indoors)



# The Nelson.

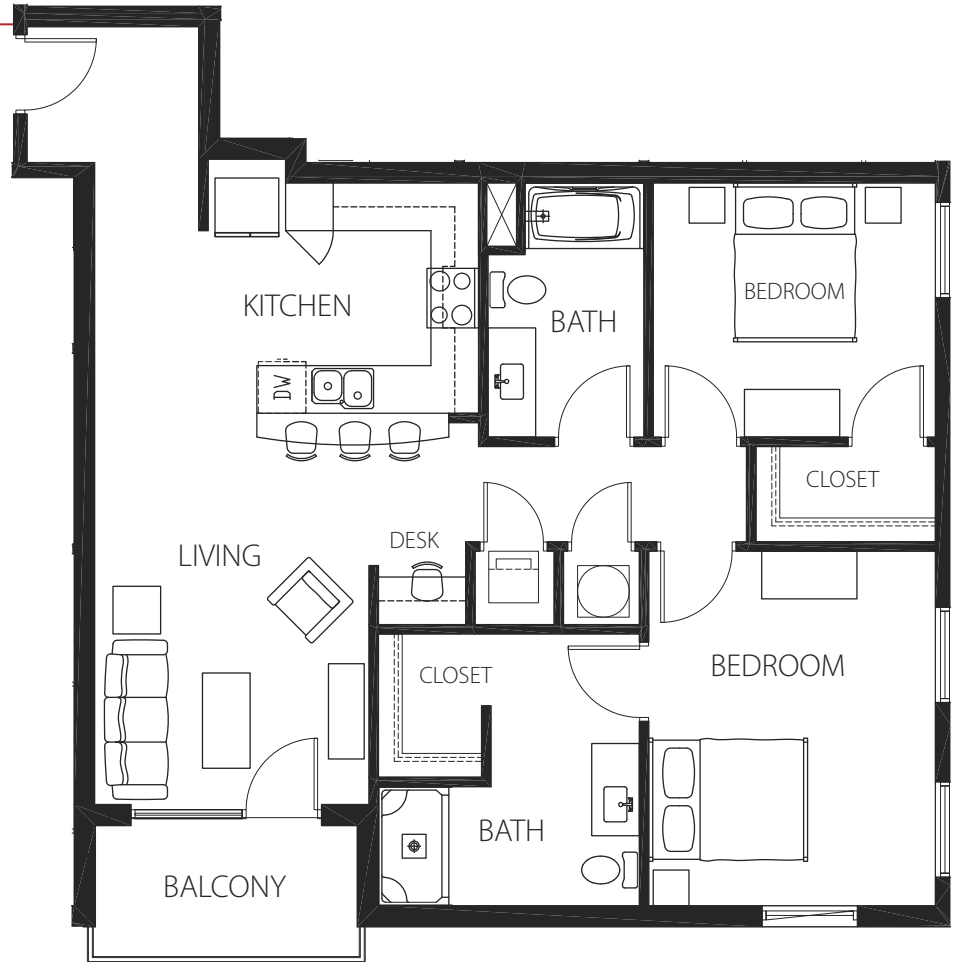
Located in a landmark building with an eye-catching curved facade, **The Harrison** offers Fort Wayne authentic upscale urban living.

**CONTACT**

The Harrison  
 (260) 402-2546  
[info@theharrisonfw.com](mailto:info@theharrisonfw.com)  
[www.theharrisonfw.com](http://www.theharrisonfw.com)

**Ballpark View Corner Unit**

2 Bedrooms / 2 Bathrooms  
 1,056 SFT (Indoors)  
 63 SFT (Outdoors)



(Interior with Ballpark View)



# The Wilson.

Located in a landmark building with an eye-catching curved facade, **The Harrison** offers Fort Wayne authentic upscale urban living.

**CONTACT**

The Harrison  
(260) 402-2546  
info@theharrisonfw.com  
www.theharrisonfw.com

## Downtown View Corner Unit

2 Bedrooms / 2 Bathrooms  
1,177 SFT (Indoors)

